

Unbelievable Project Offer

90% Bank Loan*

1 BHK ₹ 23.90 L*
Land area - 880sqft • Built area - 450sqft

2 BHK ₹ 32.90 L*
Land area - 1080sqft • Built area - 725sqft

3 BHK ₹ 45.50 L*
Land area - 1215sqft • Built area - 1250sqft

4 BHK ₹ 53.90 L*
Land area - 1215sqft • Built area - 1600sqft

Why?

 **PRESTIGE TOWN**
Phase 2



24 Hrs Security



40,000L
Overhead Tank



Fully Fenced
Compound Wall



Tap Line
for Each Plot



Children Play Park



Walking Track



Entrance Arch



Rainwater Drainage



Avenue Trees



Street Lights



Tar Roads

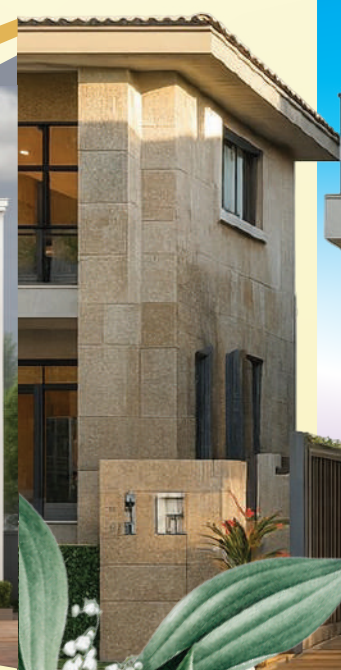


EB Connection



PRESTIGE TOWN
Phase 2
PREMIUM PLOTS & VILLAS

Mathampalayam Opp
Police Quarters
(TNPHC) 96acers
Very Close to
Mettupalayam - Ooty NH



90% Bank Loan*

2 BHK ₹ 32.90
Individual House Lakhs* only



HOSPITALS Within 10-15 Mins

- Sowmiya Hospital
- Subbu Hospital
- Savidha Hospitals Pvt Ltd
- KR Hospital
- DJ Hospital

Nearby COLLEGES

- Dr. RV Arts & Science College
- Sree Sakthi Engineering College
- Karunya College
- Sir C.V. Raman Arts & Science College
- Christ the King Engineering College
- Thiruvalluvar Polytechnic College

Nearby SCHOOLS

- Sai Vidhya Niketan MHSS
- Aksharam International School
- Vidya Vikas CBSE School
- Christ the King MHSS
- The Ooty Public School
- KR Public School
- Mastermind International School

For more Details Contact us

Bank Loan Facility Available



HIGHLIGHTS



2 mins from
Mettupalayam Road



5 mins from
Karamadai Railway Station



5-10 mins travel to
10+ Schools & Colleges



30 mins to
Black Thunder

A Golden Chance To Invest In Coimbatore's Fastest-growing Corridor